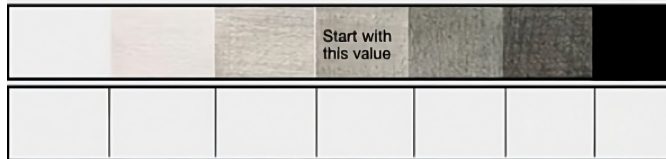


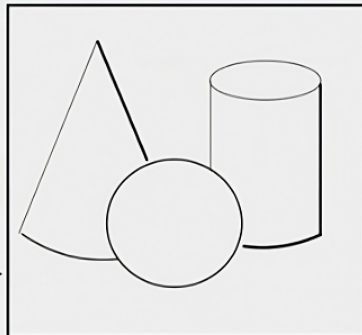
Ice Cream Cone - Grid and Value

Name: _____ Date: _____

1st Step: Below create a value scale by creating tones from dark to light. Lift the pressure off the pencil to create a lighter value. Start with one of the middle values and work your way to light or dark.



2nd Step: Practice using value by reproducing the values above onto the objects to the right.



Inquirers

- Curious
- Passionate about learning
- Ask questions
- Make connections

Thinkers

- Problem solvers
- Creative, critical, reflective
- Open Minded

Communicators

- Exchange ideas
- Listen
- Ask Questions
- Use Languages

Contributors

- Contribute positively
- Integrity
- Respect

Agents of our own Learning

- Plan time
- Set goals
- Manage time
- Take risks
- Persevere
- Balance

4th Step: Feedback- Find 3 students to get feedback from. They must tell you something you can fix or improve.

Feedback #1: _____

Feedback #2: _____

Feedback #3: _____

5th Step: Reflection- Answer the below questions.

1. What do you think you did well on? Why?

2. What was the hardest part of this project? Why?

3. Explain what learning identity (look to the left) best describes you during this project? Why?

3rd Step: Grid Directions: Take a pencil and lightly connect the **green** lines to create a light grid. Choose one box from the image below and redraw only the outlines in the same box to the right. Once you have all of the outlines drawn, you can erase your grid lines and start to add the shading using all the values on the value scale. Make sure to not have big black outlines around your ice cream cone.

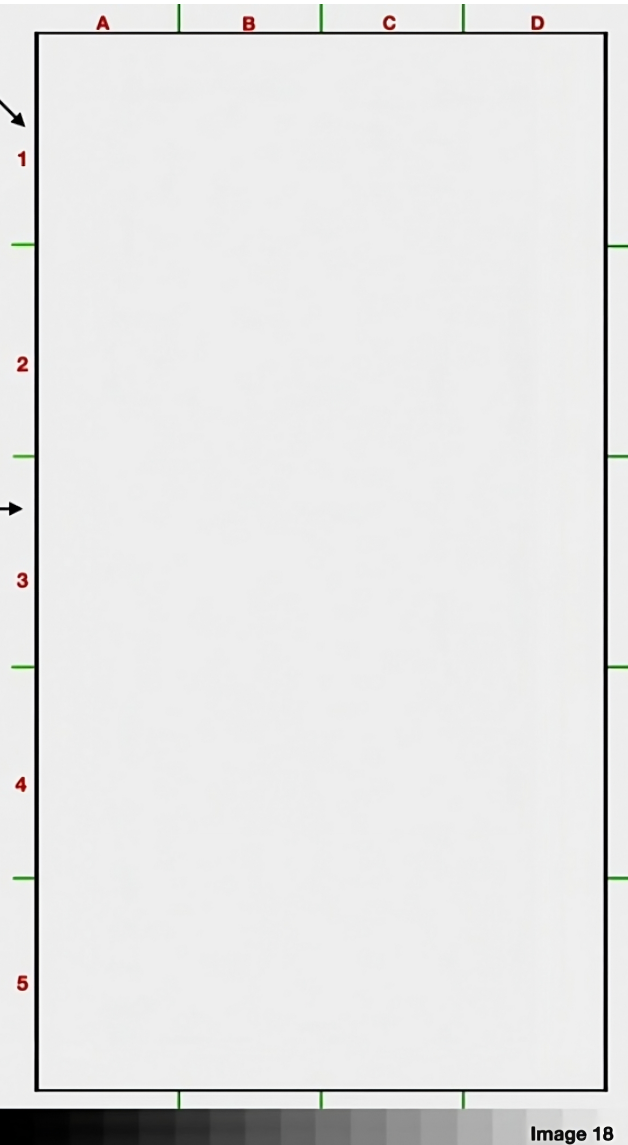
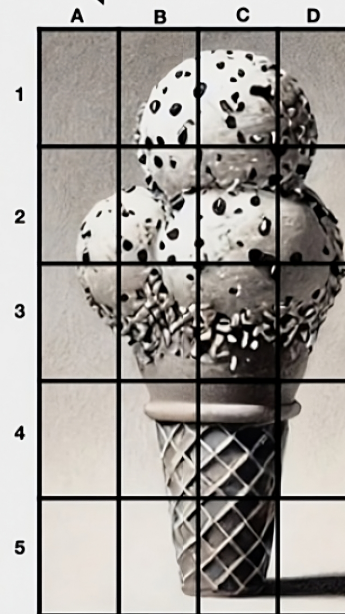


Image 18